

135QS & 138QS Rising Stem Groove Joint Ends Resilient Wedge Gate Valves

TECHNICAL SPECS:

Bolted bonnet non rising stem resilient wedge Flanged X Groove. Groove X Groove.

250 PSI /17.2 Bar non-shock cold working pressure

Conform to AWWA C509

Coating electrostatically applied fusion bonded epoxy 0.2-0.5 mm inside and outside as per AWWA C550.

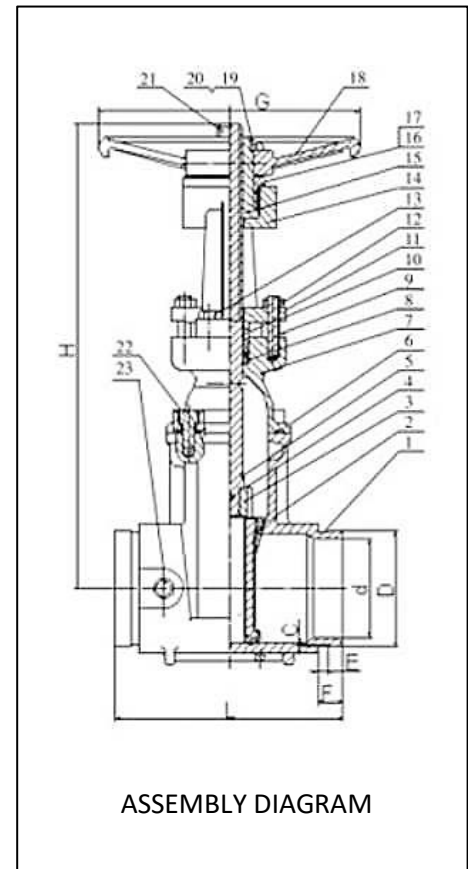
Maximum operating temperature 160°C/71°C.

Freezing weather precaution:- Subsequent to testing a piping system, valve should be in an open position to avoid complete drainage.

Standard material of construction:

Component	Material / Standard
Valve body	Cast iron ASTM A 536
Resilient wedge	Ductile iron ASTM A 536/ EPDM D2000
Wedge nut	Bonze ASTM B 584 UNSC83600
Dowel pin	SS ASTM A276 UNS S42000
Stem	Bronze ASTM B 150 UNS C61400
Bonnet gasket	EPDM ASTM D2000
Bonnet screw	Alloy steel ASTM A 574M Zinc plated
Bonnet	Cast iron ASTM A 126 B
Threaded rod	Carbon steel zinc plated
Gland bushing	Bronze ASTM B 584
Gland nut	SS 18-8
Gland	Cast iron ASTM A 126 B
Yoke screw	Alloy steel ASTM A 574M Zinc plated
Yoke bushing	Bronze ASTM B 584
Flat point set screw	Alloy steel ASTM F 912M Black oxide
Yoke bushing retainer	Cast iron ASTM A 126 B
Handwheel	Ductile iron ASTM A536
Flat head screw	Carbon steel zinc plated
Handwheel nut	Carbon steel zinc plated
Stem back seat O ring	EPDM ASTM D2000

ASSEMBLY DIAGRAM:



DIMENSIONS:

Size		L		C		D		F		G		d		D1		T		Bolt circle		Flange holes	Turns to open
In	mm	In	mm	In	mm	In	mm	In	mm	In	mm	In	mm	In	mm	In	mm	In	mm		
3	80	8	203	0.08	2	3.5	89	0.35	9	0.98	25	10	254	3	73	0.75	19	6	152	4φ-19	10.5
4	100	9	229	0.08	2	4.49	114	0.35	9	0.98	25	10	254	4	100	0.94	24	7.5	190	8φ-19	13.75
6	150	10.5	267	0.08	2	6.61	168	0.35	9	0.98	25	12.4	315	6	150	1	25.4	9.5	241	8φ-23	16
8	200	11.5	292	0.09	2.3	8.62	219	0.47	12	1.22	31	14.76	375	8	200	1.13	28.6	11.73	298	8φ-23	17.5
10	250	13	330	0.1	2.55	10.74	272.9	0.52	13.2	1.25	31.7	16.38	416	10	250	1.19	30.2	14.25	362	12φ-23	21.5
12	300	14	356	0.13	3.35	12.78	324.5	0.52	13.2	1.25	31.7	17.52	445	12	300	1.25	31.8	17.01	432	12φ-24	26